
Your Results On Survey 246: January 2021

V1.1 Laboratory Programme: Screening tests (level 1) and factor assays (level2).

For screening tests, (PT/INR, PT for diagnosis, APTT, heparin dosage assessment (HDA) and thrombin time (TT)) *reagent-specific* and *overall* median results are calculated, and your percentage deviation from each median is determined. Performance is graded "Outwith consensus" if the percentage deviation is greater than 15% (20% for HDA and TT) from either the *reagent-specific* median if the number of users of your reagent is equal to or greater than 10 **or** the *overall* median if the number of users of your reagent is less than 10. *Please note that for Quick's PT/INR, the number of users are determined as those participants using a locally-derived arithmetic or geometric MNPT.* For Clauss fibrinogen assays, results are assessed against the overall median for this technique. Results >15% deviation from the median are considered outwith consensus. Multifibrin U method users are assessed separately.

Three *consecutive* instances of performance outwith consensus will generate a letter of concern, with an offer of assistance, from the Scheme Director.

All other assays are graded by the quantile grading system. Grades are recorded in upper or lower case, indicating whether the results were above (upper case) or below (lower case) the median. Results that are identical to the median are awarded with an "A". For cumulative grades this will aid in assessment of bias. Results "persistently outwith consensus" will generate a letter of concern, with an offer of assistance, from the Scheme Director. Due to previously identified differences between methodologies, performance analysis of Factor VIII:C 2-stage and chromogenic assays will not be assessed against the overall median. D-Dimer results are assessed against method specific medians. For further details refer to the survey newsletter, Participants Manual, or website www.ukneqasbc.org

Please note: for assays assessed with the A-E grading system, Z scores have been calculated and included on this report – please see the survey newsletter for more information.

*N/R indicates no result.

Survey : 246

Test	Quick's INR
Sample No	21/01
Your Reagent	
Your INR	
Participants in your group	30
Reagent Median INR	2.78
% Deviation	
Overall Participants	925
Overall median INR	3
% Deviation	
Your assessment against	Reagent
Your performance	Within consensus
Your previous % deviation	
Your dosage interpretation	Adequate
Overall Interpretations (%)	
Underdosed	0.7
Adequate	60.2
Overdosed	39.1
Non-participation code	

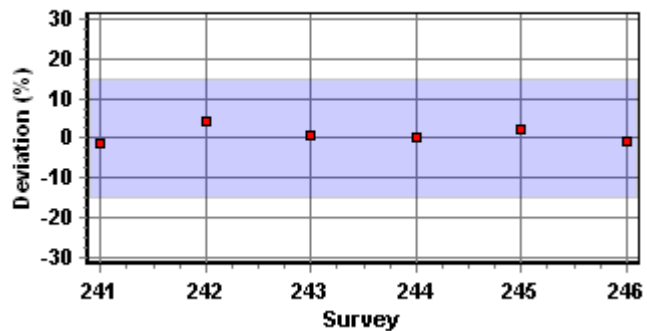
▼ = Your Result

Your peer group

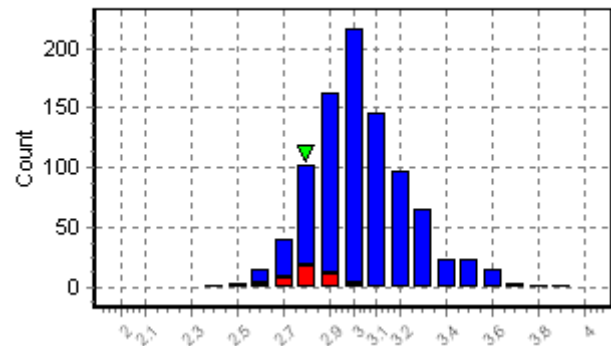
All other results



Quick's INR



INR 1 (INR) Siemens Thromborel S



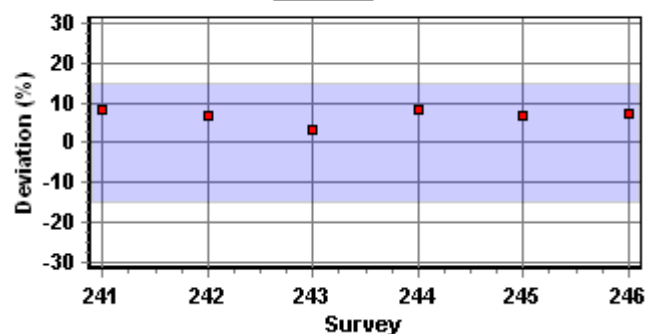
Survey : 246

Test	APTT
Sample No	21/02
Sample Type	
Your Reagent	
Your Result	
Your Units	Ratio
Your normal range/value	0.8 - 1.2
Your test/normal ratio	
Participants in your group	293
Reagent Specific Median	1.46
% Deviation	
Overall Participants	948
Overall median	1.32
% Deviation	18.9
Your assessment against	Reagent
Your performance	Within consensus
Your previous % deviation	
Your interpretation	Abnormal
Overall Interpretations (%)	
Normal	9.3
Borderline	14.3
Abnormal	76.4
Non-participation code	

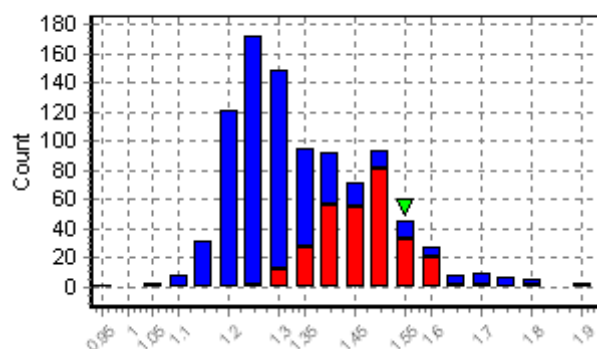
▼ = Your Result

Your peer group

All other results

A.P.T.T.

APTT (Ratio) Siemens Actin FS



Survey : 246

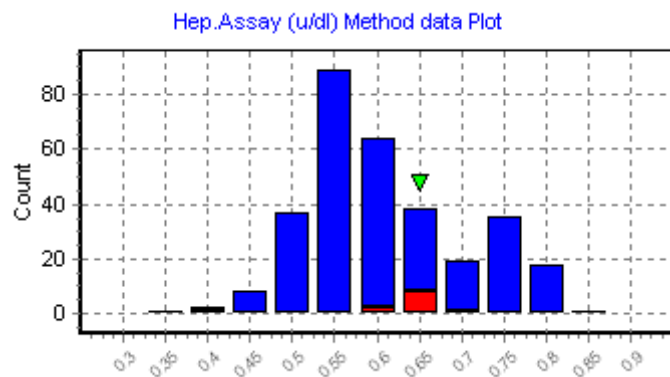
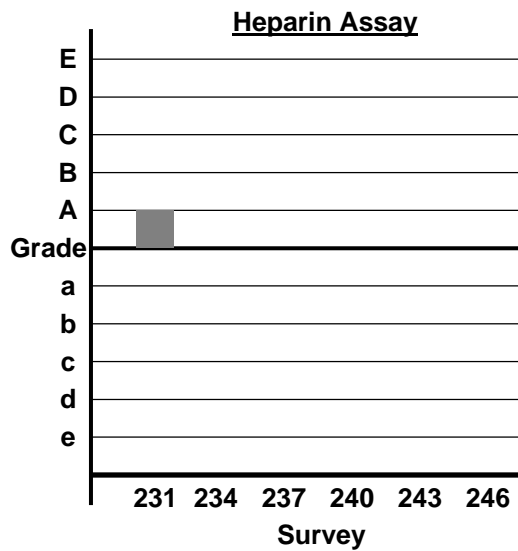
Test	Heparin Assay
Sample No	21/03
Your Method	
Your Kit Source	
Your Result	
Method n	12
Overall Participants	326
Method Median	
% Deviation	
Z-Score	**
Your performance quantile	*
I.Q. (A-grade limits)	0 - 0
Your Cumulative Grades	* / * / *
Your Performance	Not assessed
Your interpretation	Adequate
Overall Interpretations (%)	
Underdosed	10.3
Adequate	86.6
Overdosed	3.2
Notes	
Non-participation code	

** Too few results for Z-Score

▼ = Your Result

Your peer group

All other results



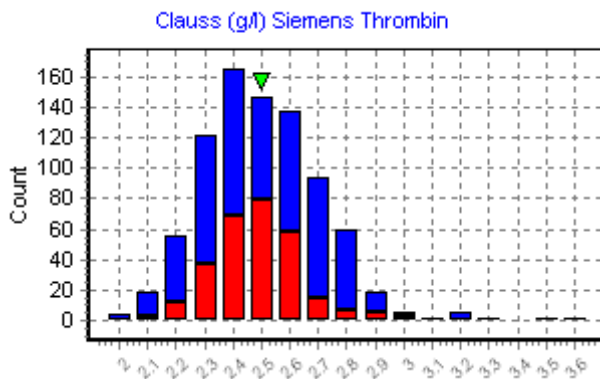
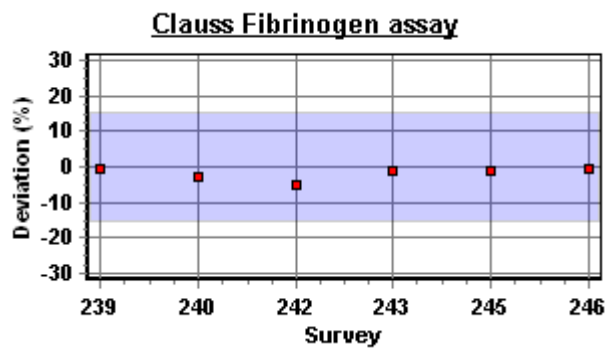
Survey : 246

Test	Fibrinogen: Clauss
Sample No	21/04
Your Method	
Your Reagent	
Your Instrument	
Your Result	
Units	g/l
Your normal range	1.5-4
Participants in your group	833
Median result (g/l)	2.47
% Deviation	
Your performance	Within consensus
Your previous % deviation	
Clauss-Derived Median	2.47
Your interpretation	Normal
Overall Interpretations (%)	
Normal	98.1
Borderline	0.5
Abnormal	1.4
Non-participation code	

▼ = Your Result

Your peer group

All other results



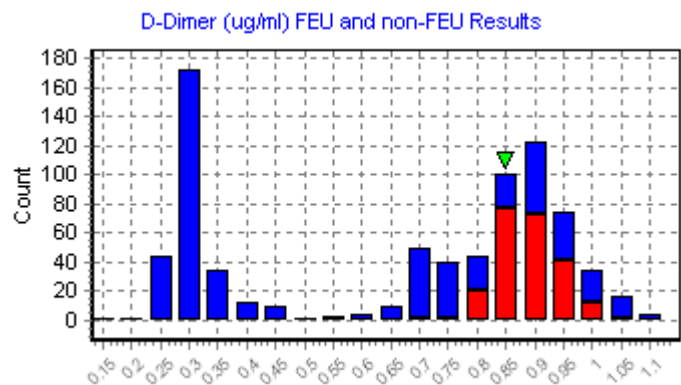
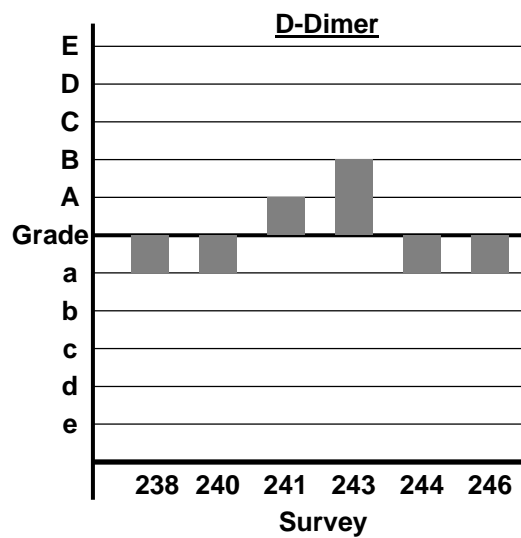
Survey : 246

Test	D-Dimer
Sample No	21/05
Kit	
Instrument	
Your Result	
Your Units	ng/ml FEU
Your Cut Off value	500
Participants in your group	231
Kit Specific Median	883
% Deviation	
Z-Score	-0.64
Interquartile range (A-grade limits)	850 - 922
Your performance quantile	a
Your cumulative grades	B / a / a
Cumulative performance	Within Consensus
Overall Participants	580
Overall median	873 (FEU)
Your interpretation	VTE Not Excluded
Overall Interpretations (%)	
VTE Unlikely	10
VTE Not Excluded	90
Notes	
Non-participation code	

▼ = Your Result

Your peer group

All other results



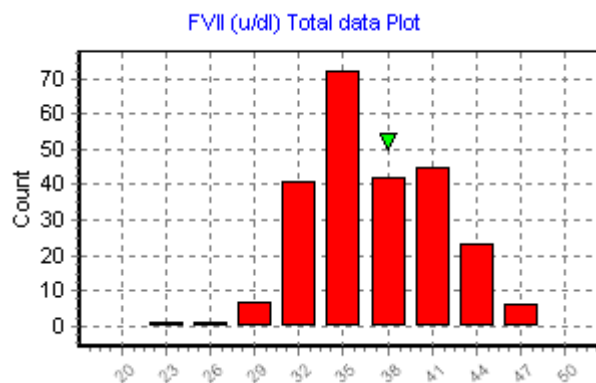
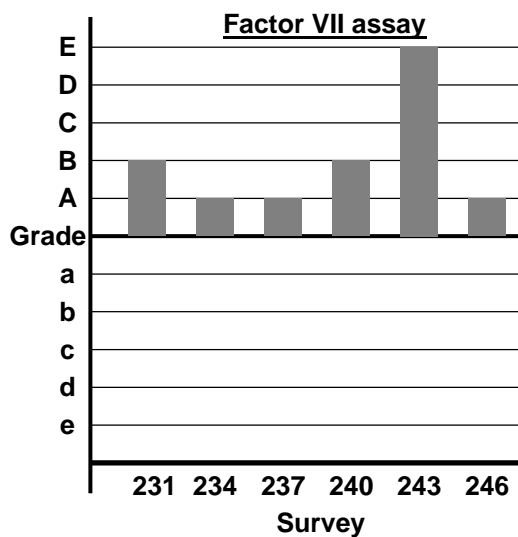
Survey : 246

Assay	Factor VII
Sample No	21/06
Your method	PT 1-stage assay
Your Reagent	
Your Result	
Units	u/dl
Your normal range	60-148
Total No of participants	240
Median result (u/dl)	36.2
Your % deviation	
Z-Score	0.51
Interquartile range (A-grade limits)	33.9-40
Your performance quantile	A
Your cumulative grades	B / E / A
Cumulative performance	Within Consensus
Your interpretation	Abnormal
Overall Interpretations (%)	
Normal	1.3
Borderline	0.9
Abnormal	97.8
Notes	
Non-participation code	

▼ = Your Result

Your peer group

All other results



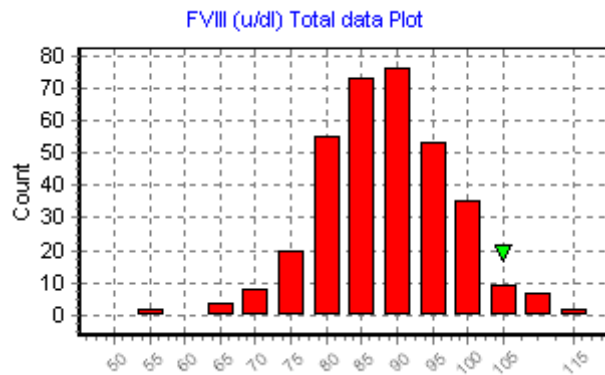
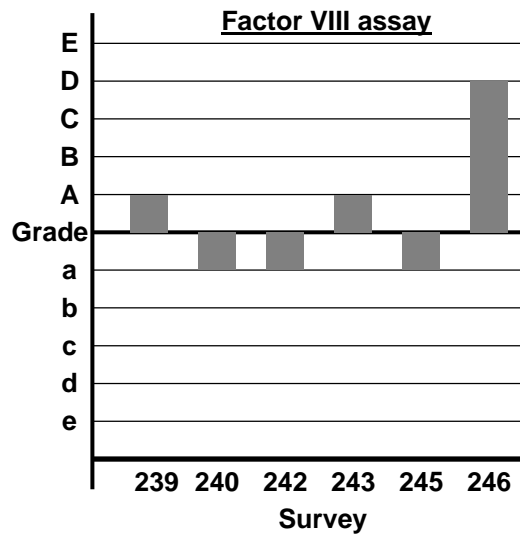
Survey : 246

Assay	Factor VIII
Sample No	21/07
Your method	APTT 1-stage assay
Your Reagent	
Your Result	102.6
Units	u/dl
Your normal range	60-152
Total No of participants	348
Median result (u/dl)	88
Your % deviation	
Z-Score	1.68
Interquartile range (A-grade limits)	82-93.5
Your performance quantile	D
Your cumulative grades	A / a / D
Cumulative performance	Within Consensus
Your interpretation	Normal
Overall Interpretations (%)	
Normal	98.8
Borderline	0.6
Abnormal	0.6
Notes	
Non-participation code	

▼ = Your Result

Your peer group

All other results



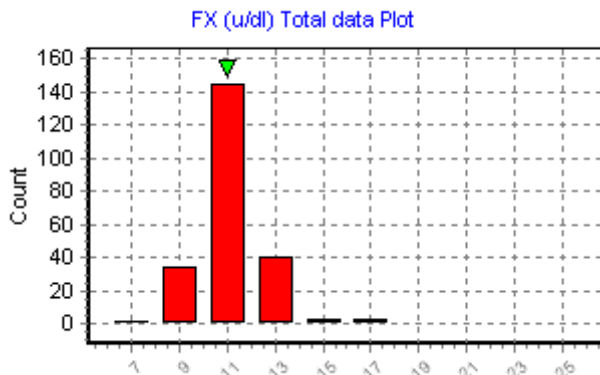
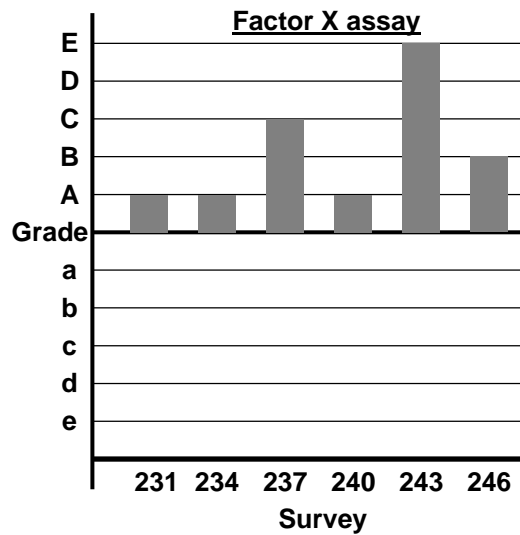
Survey : 246

Assay	Factor X
Sample No	21/08
Your method	
Your Reagent	
Your Result	
Units	u/dl
Your normal range	70-148
Total No of participants	228
Median result (u/dl)	11
Your % deviation	
Z-Score	0.78
Interquartile range (A-grade limits)	10-11.6
Your performance quantile	B
Your cumulative grades	A / E / B
Cumulative performance	Within Consensus
Your interpretation	Abnormal
Overall Interpretations (%)	
Normal	1.8
Borderline	0.4
Abnormal	97.8
Notes	
Non-participation code	

▼ = Your Result

Your peer group

All other results



Survey : 246

Assay	Factor XII
Sample No	21/09
Your method	APTT 1-stage assay
Your Reagent	
Your Result	
Units	u/dl
Your normal range	49-174
Total No of participants	237
Median result (u/dl)	35
Your % deviation	
Z-Score	-1.15
Interquartile range (A-grade limits)	29.6-39
Your performance quantile	c
Your cumulative grades	a / b / c
Cumulative performance	Within Consensus
Your interpretation	Abnormal
Overall Interpretations (%)	
Normal	4.3
Borderline	1.7
Abnormal	93.9
Notes	
Non-participation code	

▼ = Your Result

Your peer group

All other results

